



Expert

ICD-10-CM Expert for Hospitals

The complete official code set
Codes valid from October 1, 2024
through September 30, 2025

SAMPLE

2025
optumcoding.com



Contents

How to Use ICD-10-CM Expert for Hospitals 2025	iii	Chapter 12. Diseases of the Skin and Subcutaneous Tissue (L00–L99)	749
Introduction	iii	Chapter 13. Diseases of the Musculoskeletal System and Connective Tissue (M00–M99)	771
What’s New for 2025	iii	Chapter 14. Diseases of Genitourinary System (N00–N99).....	861
Conversion Table	iii	Chapter 15. Pregnancy, Childbirth, and the Puerperium (O00–O9A)	883
10 Steps to Correct Coding	iii	Chapter 16. Certain Conditions Originating in the Perinatal Period (P00–P96)	923
Official ICD-10-CM Guidelines for Coding and Reporting	iii	Chapter 17. Congenital Malformations, Deformations, and Chromosomal Abnormalities (Q00–Q99)	937
Indexes	iii	Chapter 18. Symptoms, Signs, and Abnormal Clinical and Laboratory Findings, Not Elsewhere Classified (R00–R99)	957
Index to Diseases and Injuries	iii	Chapter 19. Injury, Poisoning, and Certain Other Consequences of External Causes (S00–T88)	979
Neoplasm Table	iii	Chapter 20. External Causes of Morbidity (V00–Y99)	1187
Table of Drugs and Chemicals	iii	Chapter 21. Factors Influencing Health Status and Contact with Health Services (Z00–Z99)	1255
External Causes Index	iii	Chapter 22. Codes for Special Purposes (U00–U85).....	1295
Index Notations	iv	Appendixes	Appendixes–1
Tabular List of Diseases	iv	Appendix A: Valid 3-character ICD-10-CM Codes.....	Appendixes–1
Code and Code Descriptions	v	Appendix B: Pharmacology List 2025.....	Appendixes–3
Tabular Notations	v	Appendix C: Z Codes for Long-Term Drug Use with Associated Drugs.....	Appendixes–18
Official Notations	v	Appendix D: Major Complication and Comorbidity (MCC) Code List.....	Appendixes–20
Optum Notations	vi	Appendix E: Complication and Comorbidity (CC) Code List	Appendixes–24
Icons	vi	Appendix F: Present on Admission (POA) Tutorial	Appendixes–40
Color Bars	viii	Appendix G: Hospital Acquired Conditions.....	Appendixes–43
Chapter-Level Notations	viii	Appendix H: Centers for Medicare & Medicaid Services Hierarchical Condition Categories (CMS-HCC).....	Appendixes–68
Appendixes	viii	Appendix I: Long-term Care Hospital Prospective Payment System	Appendixes–71
Illustrations	ix	Appendix J: Long-Term Care Hospital Quality Reporting Program	Appendixes–72
What’s New for 2025	xi	Illustrations	Illustrations–1
Official Updates	xi	Chapter 3. Diseases of the Blood and Blood-forming Organs and Certain Disorders Involving the Immune Mechanism (D50–D89)	Illustrations–1
Proprietary Updates	xii	Red Blood Cells	Illustrations–1
Conversion Table of ICD-10-CM Codes	xiii	White Blood Cell	Illustrations–1
10 Steps to Correct Coding	xv	Platelet	Illustrations–2
ICD-10-CM Official Guidelines for Coding and Reporting	Coding Guidelines–1	Coagulation	Illustrations–2
ICD-10-CM Index to Diseases and Injuries	1	Spleen Anatomical Location and External Structures	Illustrations–3
ICD-10-CM Neoplasm Table	343	Spleen Interior Structures	Illustrations–3
ICD-10-CM Table of Drugs and Chemicals	362	Chapter 4. Endocrine, Nutritional, and Metabolic Diseases (E00–E89)	Illustrations–4
ICD-10-CM Index to External Causes	412	Endocrine System	Illustrations–4
ICD-10-CM Tabular List of Diseases and Injuries	449	Thyroid	Illustrations–5
Chapter 1. Certain Infectious and Parasitic Diseases (A00–B99), U07.1, U09.9	449	Thyroid and Parathyroid Glands	Illustrations–5
Chapter 2. Neoplasms (C00–D49)	475	Pancreas	Illustrations–6
Chapter 3. Diseases of the Blood and Blood-forming Organs and Certain Disorders Involving the Immune Mechanism (D50–D89)	515	Anatomy of the Adrenal Gland	Illustrations–6
Chapter 4. Endocrine, Nutritional, and Metabolic Diseases (E00–E89)	529	Structure of an Ovary	Illustrations–7
Chapter 5. Mental, Behavioral and Neurodevelopmental Disorders (F01–F99)	553	Testis and Associated Structures	Illustrations–7
Chapter 6. Diseases of the Nervous System (G00–G99)	585	Thymus	Illustrations–8
Chapter 7. Diseases of the Eye and Adnexa (H00–H59)	609		
Chapter 8. Diseases of the Ear and Mastoid Process (H60–H95)	647		
Chapter 9. Diseases of the Circulatory System (I00–I99)	659		
Chapter 10. Diseases of the Respiratory System (J00–J99), U07.0	705		
Chapter 11. Diseases of the Digestive System (K00–K95)	723		

<p>Chapter 6. Diseases of the Nervous System (G00–G99) .. Illustrations–9 Brain Illustrations–9 Cranial Nerves Illustrations–9 Peripheral Nervous System Illustrations–10 Spinal Cord and Spinal Nerves Illustrations–11 Nerve Cell Illustrations–12 Trigeminal and Facial Nerve Branches Illustrations–12</p> <p>Chapter 7. Diseases of the Eye and Adnexa (H00–H59) Illustrations–13 Eye Illustrations–13 Posterior Pole of Globe/Flow of Aqueous Humor Illustrations–13 Lacrimal System Illustrations–14 Eye Musculature Illustrations–14 Eyelid Structures Illustrations–14</p> <p>Chapter 8. Diseases of the Ear and Mastoid Process (H60–H95) Illustrations–15 Ear Anatomy Illustrations–15</p> <p>Chapter 9. Diseases of the Circulatory System (I00–I99) Illustrations–16 Anatomy of the Heart Illustrations–16 Heart Cross Section Illustrations–16 Heart Valves Illustrations–17 Heart Conduction System Illustrations–17 Coronary Arteries Illustrations–18 Arteries Illustrations–19 Veins Illustrations–20 Internal Carotid and Vertebral Arteries and Branches Illustrations–21 External Carotid Artery and Branches Illustrations–21 Branches of Abdominal Aorta Illustrations–22 Portal Venous Circulation Illustrations–22 Lymphatic System Illustrations–23 Axillary Lymph Nodes Illustrations–24 Lymphatic System of Head and Neck Illustrations–24 Lymphatic Capillaries Illustrations–25 Lymphatic Drainage Illustrations–25</p> <p>Chapter 10. Diseases of the Respiratory System (J00–J99), U07.0 Illustrations–26 Respiratory System Illustrations–26 Upper Respiratory System Illustrations–27 Lower Respiratory System Illustrations–27 Paranasal Sinuses Illustrations–27 Lung Segments Illustrations–28 Alveoli Illustrations–28</p>	<p>Chapter 11. Diseases of the Digestive System (K00–K95) Illustrations–29 Digestive System Illustrations–29 Omentum and Mesentery Illustrations–30 Peritoneum and Retroperitoneum Illustrations–30</p> <p>Chapter 12. Diseases of the Skin and Subcutaneous Tissue (L00–L99) Illustrations–31 Nail Anatomy Illustrations–31 Skin and Subcutaneous Tissue Illustrations–31</p> <p>Chapter 13. Diseases of the Musculoskeletal System and Connective Tissue (M00–M99) Illustrations–32 Bones and Joints Illustrations–32 Shoulder Anterior View Illustrations–33 Shoulder Posterior View Illustrations–33 Elbow Anterior View Illustrations–33 Elbow Posterior View Illustrations–33 Hand Illustrations–33 Hip Anterior View Illustrations–34 Hip Posterior View Illustrations–34 Knee Anterior View Illustrations–34 Knee Posterior View Illustrations–34 Foot Illustrations–34 Muscles Illustrations–35</p> <p>Chapter 14. Diseases of Genitourinary System (N00–N99) Illustrations–36 Urinary System Illustrations–36 Male Genitourinary System Illustrations–37 Female Internal Genitalia Illustrations–37 Female Genitourinary Tract Lateral View Illustrations–37</p> <p>Chapter 15. Pregnancy, Childbirth, and the Puerperium (O00–O9A) Illustrations–38 Term Pregnancy – Single Gestation Illustrations–38 Twin Gestation–Dichorionic– Diamniotic (DI-DI) Illustrations–38 Twin Gestation–Monochorionic– Diamniotic (MO-DI) Illustrations–39 Twin Gestation–Monochorionic– Monoamniotic (MO-MO) Illustrations–39</p> <p>Chapter 19. Injury, Poisoning, and Certain Other Consequences of External Causes (S00–T88) Illustrations–40 Types of Fractures Illustrations–40 Salter-Harris Fracture Types Illustrations–40</p>
--	--

Age Edits

N Newborn Age: 0

These diagnoses are intended for newborns and neonates and the patient's age must be 0 years.

N47.0 Adherent prepuce, newborn N ♂

P Pediatric Age: 0-17

These diagnoses are intended for children and the patient's age must be between 0 and 17 years.

L21.1 Seborrheic infantile dermatitis P

M Maternity Age: 9-64

These diagnoses are intended for childbearing patients between the age of 9 and 64 years.

O02.9 Abnormal product of conception, unspecified M ♀

A Adult Age: 15-124

These diagnoses are intended for patients between the age of 15 and 124 years.

R54 Age-related physical debility A
 Frailty
 Old age
 Senescence
 Senile asthenia
 Senile debility
EXCLUDES1 age-related cognitive decline (R41.81)
 sarcopenia (M62.84)
 senile psychosis (F03)
 senility NOS (R41.81)

Sex Edits

♂ Male diagnosis only

Q98.0 Klinefelter syndrome karyotype 47, XXY ♂

♀ Female diagnosis only

N35.12 Postinfective urethral stricture, not elsewhere classified, female ♀

H1 - H14 Hospital Acquired Condition (HAC)

These icons identify codes that are high-cost and/or high-volume (CC or MCC), that when assigned as a secondary diagnosis result in assignment of a case to a higher-paying MS-DRG. The condition or diagnosis represented by these codes is considered reasonably preventable through the application of evidence-based guidelines. If the condition is not present on admission (meaning it developed during the hospital admission), the case will not group to the higher-paying MS-DRG based solely upon the reporting of the HAC code. Many of these HACs are conditional and are based on reporting the specific diagnosis code(s) in combination with certain procedure codes.

A comprehensive list of all HAC codes that coincide with these icons appears in appendix G, at the back of this book.

Note: Hospital-acquired conditions do not impact MS-LTC-DRG assignment.

N15.1 Renal and perinephric abscess MCC H6

CC Condition

This icon identifies a complication or comorbidity diagnosis that may affect DRG assignment. A complication or comorbidity diagnosis, CC condition, is defined as a significant acute disease, a significant acute manifestation of a chronic disease, an advanced or end-stage chronic disease, or a chronic disease associated with systemic physiological decompensation and debility that have consistently greater impact on hospital resources.

A comprehensive list of ICD-10-CM codes considered a CC appears in appendix E, at the back of this book.

G90.59 Complex regional pain syndrome I of other specified site CC

MCC Condition

This icon identifies a major complication or comorbidity diagnosis that may affect DRG assignment. An MCC condition meets the same criteria as a CC condition but is associated with a higher acuity level and hospital resource consumption is expected to be higher than that for a CC condition. There are fewer conditions that meet the criteria as an MCC than those for a CC condition.

A comprehensive list of ICD-10-CM codes considered an MCC appears in appendix D, at the back of this book.

77th S35.238 Other injury of inferior mesenteric artery MCC

Note: The assignment of an MS-DRG or MS-LTC-DRG often depends on the presence or absence of a secondary diagnosis code that is designated as an MCC or CC. However, in some instances the MCC or CC designation for that secondary diagnosis code is negated due to its relationship with the principal diagnosis; this is referred to as CC exclusion. The ICD-10 MS-DRG Definitions Manual included with the IPPS final rule provides a list of all principal diagnosis codes that would render ineffective the MCC/CC designation for a particular ICD-10-CM code when used as a secondary diagnosis. Optum has provided this CC exclusion list in an easily searchable data file, which can be accessed at the following:

<https://www.optumcoding.com/ProductUpdates/>
 Title: "2025 ICD-10-CM for Hospitals CC Excludes Data File"
 Password: XXXXXX

UNS Unspecified Site

This icon identifies codes that are considered an MCC or CC but lack specificity in regard to their anatomical location. The medical record documentation should be reviewed carefully, to ensure that no other code within the same category or subcategory can be assigned for greater specificity.

G81.00 Flaccid hemiplegia affecting unspecified side CC UNS HCC

UPD Unacceptable Principal Diagnosis

This icon identifies codes that should not be assigned as principal diagnosis for *inpatient* admissions. Codes with an unacceptable principal diagnosis edit are considered supplementary — describing circumstances that influence an individual's health status or an additional code — identifying conditions that are not specific manifestations but may be due to an underlying cause.

77th T48.5X5 Adverse effect of other anti-common-cold drugs UPD

HIV HIV-related Condition

This icon identifies codes that are considered a major HIV-related diagnosis. When the condition is coded in combination with a diagnosis of human immunodeficiency virus (HIV), code B20, the case will move from MS-DRG/MS-LTC-DRG 977 to MS-DRGs/MS-LTC-DRGs 974-976.

G96.9 Disorder of central nervous system, unspecified HIV

Disorder

Disorder — *continued*
 binocular — *continued*
 movement — *continued*
 convergence
 excess H51.12
 insufficiency H51.11
 internuclear ophthalmoplegia — *see* Ophthalmoplegia, internuclear
 palsy of conjugate gaze H51.0
 specified type NEC H51.8
 vision NEC — *see* Disorder, vision, binocular
 bipolar (I) seasonal (type I) F31.9
 and related due to a known physiological condition with
 manic features F06.33
 manic- or hypomanic-like episodes F06.33
 mixed features F06.34
 current (or most recent) episode
 depressed F31.9
 with psychotic features F31.5
 without psychotic features F31.30
 mild F31.31
 moderate F31.32
 severe (without psychotic features) F31.4
 with psychotic features F31.5
 hypomanic F31.0
 manic F31.9
 with psychotic features F31.2
 without psychotic features F31.10
 mild F31.11
 moderate F31.12
 severe (without psychotic features) F31.13
 with psychotic features F31.2
 mixed F31.60
 mild F31.61
 moderate F31.62
 severe (without psychotic features) F31.63
 with psychotic features F31.64
 severe depression (without psychotic features) F31.4
 with psychotic features F31.5
 II (type 2) F31.81
 in remission (currently) F31.70
 in full remission
 most recent episode
 depressed F31.76
 hypomanic F31.72
 manic F31.74
 mixed F31.78
 in partial remission
 most recent episode
 depressed F31.75
 hypomanic F31.71
 manic F31.73
 mixed F31.77
 organic F06.30
 single manic episode F30.9
 mild F30.11
 moderate F30.12
 severe (without psychotic symptoms) F30.13
 with psychotic symptoms F30.2
 specified NEC F31.89
 bladder N32.9
 functional NEC N31.9
 in schistosomiasis B65.0 [N33]
 specified NEC N32.89
 bleeding D68.9
 blood D75.9
 in congenital early syphilis A50.09 [D77]
 body dysmorphic F45.22
 bone M89.9
 continuity M84.9
 specified type NEC M84.80
 ankle M84.87- ✓
 fibula M84.86- ✓
 foot M84.87- ✓
 hand M84.84- ✓
 humerus M84.82- ✓
 neck M84.88
 pelvis M84.859
 radius M84.83- ✓
 rib M84.88
 shoulder M84.81- ✓
 skull M84.88
 thigh M84.85- ✓
 tibia M84.86- ✓
 ulna M84.83- ✓

Disorder — *continued*
 bone — *continued*
 continuity — *continued*
 specified type — *continued*
 vertebra M84.88
 density and structure M85.9
 cyst — *see also* Cyst, bone, specified type NEC
 aneurysmal — *see* Cyst, bone, aneurysmal
 solitary — *see* Cyst, bone, solitary
 diffuse idiopathic skeletal hyperostosis — *see*
 Hyperostosis, ankylosing
 fibrous dysplasia (monostotic) — *see* Dysplasia, fibrous, bone
 fluorosis — *see* Fluorosis, skeletal
 hyperostosis of skull M85.2
 osteitis condensans — *see* Osteitis, condensans
 specified type NEC M85.8- ✓
 ankle M85.87- ✓
 foot M85.87- ✓
 forearm M85.83- ✓
 hand M85.84- ✓
 lower leg M85.86- ✓
 multiple sites M85.89
 neck M85.88
 rib M85.88
 shoulder M85.81- ✓
 skull M85.88
 thigh M85.85- ✓
 upper arm M85.82- ✓
 vertebra M85.88
 development and growth NEC M89.20
 carpus M89.24- ✓
 clavicle M89.21- ✓
 femur M89.25- ✓
 fibula M89.26- ✓
 finger M89.24- ✓
 humerus M89.22- ✓
 ilium M89.28
 ischium M89.28
 metacarpus M89.24- ✓
 metatarsus M89.27- ✓
 multiple sites M89.29
 neck M89.28
 radius M89.23- ✓
 rib M89.28
 scapula M89.21- ✓
 skull M89.28
 tarsus M89.27- ✓
 tibia M89.26- ✓
 toe M89.27- ✓
 ulna M89.23- ✓
 vertebra M89.28
 specified type NEC M89.8X- ✓
 brachial plexus G54.0
 branched-chain amino-acid metabolism E71.2
 specified NEC E71.19
 breast N64.9
 agalactia — *see* Agalactia
 associated with
 lactation O92.70
 specified NEC O92.79
 pregnancy O92.20
 specified NEC O92.29
 puerperium O92.20
 specified NEC O92.29
 cracked nipple — *see* Cracked nipple
 galactorrhea — *see* Galactorrhea
 hypogalactia O92.4
 lactation disorder NEC O92.79
 mastitis — *see* Mastitis
 nipple infection — *see* Infection, nipple
 retracted nipple — *see* Retraction, nipple
 specified type NEC N64.89
 Briquet's F45.0
 bullous, in diseases classified elsewhere L14
 caffeine use
 mild
 with
 caffeine-induced
 anxiety disorder F15.180
 sleep disorder F15.182
 moderate or severe
 with
 caffeine-induced
 anxiety disorder F15.280
 sleep disorder F15.282

Disorder — *continued*
 cannabis use
 mild F12.10
 with
 cannabis intoxication delirium F12.121
 with perceptual disturbances F12.122
 without perceptual disturbances F12.129
 cannabis-induced
 anxiety disorder F12.180
 psychotic disorder F12.159
 sleep disorder F12.188
 in remission (early) (sustained) F12.11
 moderate or severe F12.20
 with
 cannabis intoxication
 with perceptual disturbances F12.222
 without perceptual disturbances F12.229
 cannabis-induced
 anxiety disorder F12.280
 psychotic disorder F12.259
 sleep disorder F12.288
 delirium F12.221
 in remission (early) (sustained) F12.21
 carbohydrate
 absorption, intestinal NEC E74.39
 metabolism (congenital) E74.9
 specified NEC E74.89
 cardiac, functional I51.89
 carnitine metabolism E71.40
 cartilage M94.9
 articular NEC — *see* Derangement, joint, articular
 cartilage
 chondrocalcinosis — *see* Chondrocalcinosis
 specified type NEC M94.8X- ✓
 articular — *see* Derangement, joint, articular
 cartilage
 multiple sites M94.8X0
 catatonia (due to known physiological condition) (with another mental disorder) F06.1
 catatonic
 due to (secondary to) known physiological condition F06.1
 organic F06.1
 central auditory processing H93.25
 cervical
 region NEC M53.82
 root (nerve) NEC G54.2
 character NOS F00.9
 childhood disintegrative NEC F84.3
 cholesterol and bile acid metabolism E78.70
 Barth syndrome E78.71
 other specified E78.79
 Smith-Lemli-Opitz syndrome E78.72
 choroid H31.9
 atrophy — *see* Atrophy, choroid
 degeneration — *see* Degeneration, choroid
 detachment — *see* Detachment, choroid
 dystrophy — *see* Dystrophy, choroid
 hemorrhage — *see* Hemorrhage, choroid
 rupture — *see* Rupture, choroid
 scar — *see* Scar, chorioretinal
 solar retinopathy — *see* Retinopathy, solar
 specified type NEC H31.8
 ciliary body — *see* Disorder, iris
 degeneration — *see* Degeneration, ciliary body
 coagulation (factor) — *see also* Defect, coagulation
 D68.9
 newborn, transient P61.6
 cocaine use
 mild F14.10
 with
 amphetamine, cocaine, or other stimulant
 intoxication
 with perceptual disturbances F14.122
 without perceptual disturbances F14.129
 cocaine intoxication delirium F14.121
 cocaine-induced
 anxiety disorder F14.180
 bipolar and related disorder F14.14
 depressive disorder F14.14
 obsessive-compulsive and related disorder F14.188
 psychotic disorder F14.159
 sexual dysfunction F14.181
 sleep disorder F14.182
 in remission (early) (sustained) F14.11
 moderate or severe F14.20

Chapter 2. Neoplasms (C00–D49)

Chapter-specific Guidelines with Coding Examples

The chapter-specific guidelines from the ICD-10-CM Official Guidelines for Coding and Reporting have been provided below. Along with these guidelines are coding examples, contained in the shaded boxes, that have been developed to help illustrate the coding and/or sequencing guidance found in these guidelines.

General guidelines

Chapter 2 of the ICD-10-CM contains the codes for most benign and all malignant neoplasms. Certain benign neoplasms, such as prostatic adenomas, may be found in the specific body system chapters. To properly code a neoplasm, it is necessary to determine from the record if the neoplasm is benign, in-situ, malignant, or of uncertain histologic behavior. If malignant, any secondary (metastatic) sites should also be determined.

Primary malignant neoplasms overlapping site boundaries

A primary malignant neoplasm that overlaps two or more contiguous (next to each other) sites should be classified to the subcategory/code .8 ('overlapping lesion'), unless the combination is specifically indexed elsewhere. For multiple neoplasms of the same site that are not contiguous such as tumors in different quadrants of the same breast, codes for each site should be assigned.

A 73-year-old white female with a large rapidly growing malignant tumor in the left breast extending from the upper outer quadrant into the axillary tail

C50.812 Malignant neoplasm of overlapping sites of left female breast

Explanation: Because this is a single large tumor that overlaps two contiguous sites, a single code for overlapping sites is assigned.

A 52-year old white female with two distinct lesions of the right breast, one (0.5 cm) in the upper outer quadrant and a second (1.5 cm) in the lower outer quadrant; path report indicates both lesions are malignant

C50.411 Malignant neoplasm of upper-outer quadrant of right female breast

C50.511 Malignant neoplasm of lower-outer quadrant of right female breast

Explanation: This patient has two distinct malignant lesions of right breast in adjacent quadrants. Because the lesions are not contiguous, two codes are reported.

Malignant neoplasm of ectopic tissue

Malignant neoplasms of ectopic tissue are to be coded to the site of origin mentioned, e.g., ectopic pancreatic malignant neoplasms involving the stomach are coded to malignant neoplasm of pancreas, unspecified (C25.9).

The neoplasm table in the Alphabetic Index should be referenced first. However, if the histological term is documented, that term should be referenced first, rather than going immediately to the Neoplasm Table, in order to determine which column in the Neoplasm Table is appropriate. For example, if the documentation indicates "adenoma," refer to the term in the Alphabetic Index to review the entries under this term and the instructional note to "see also neoplasm, by site, benign." The table provides the proper code based on the type of neoplasm and the site. It is important to select the proper column in the table that corresponds to the type of neoplasm. The Tabular List should then be referenced to verify that the correct code has been selected from the table and that a more specific site code does not exist.

See Section I.C.21. Factors influencing health status and contact with health services, Status, for information regarding Z15.0, codes for genetic susceptibility to cancer.

a. Admission/Encounter for treatment of primary site

If the malignancy is chiefly responsible for occasioning the patient admission/encounter and treatment is directed at the primary site, designate the primary malignancy as the principal/first-listed diagnosis.

The only exception to this guideline is if the administration of chemotherapy, immunotherapy or external beam radiation therapy is chiefly responsible for occasioning the admission/encounter. In that case, assign the appropriate Z51.-- code as the first-listed or principal diagnosis, and the underlying diagnosis or problem for which the service is being performed as a secondary diagnosis.

b. Admission/Encounter for treatment of secondary site

When a patient is admitted because of a primary neoplasm with metastasis and treatment is directed toward the secondary site only, the secondary neoplasm is designated as the principal diagnosis even though the primary malignancy is still present.

Patient with primary prostate cancer with metastasis to lungs admitted for wedge resection of mass in right lung

C78.01 Secondary malignant neoplasm of right lung

C61 Malignant neoplasm of prostate

Explanation: Since the admission is for treatment of the lung metastasis, the secondary lung metastasis is sequenced before the primary prostate cancer.

c. Coding and sequencing of complications

Coding and sequencing of complications associated with the malignancies or with the therapy thereof are subject to the following guidelines:

1) Anemia associated with malignancy

When admission/encounter is for management of an anemia associated with the malignancy, and the treatment is only for anemia, the appropriate code for the malignancy is sequenced as the principal or first-listed diagnosis followed by the appropriate code for the anemia (such as code D63.0, Anemia in neoplastic disease).

Patient is admitted for treatment of anemia in advanced colon cancer

C18.9 Malignant neoplasm of colon, unspecified

D63.0 Anemia in neoplastic disease

Explanation: Even though the admission was solely to treat the anemia, this guideline indicates that the code for the malignancy is sequenced first.

2) Anemia associated with chemotherapy, immunotherapy and radiation therapy

When the admission/encounter is for management of an anemia associated with an adverse effect of the administration of chemotherapy or immunotherapy and the only treatment is for the anemia, the anemia code is sequenced first followed by the appropriate codes for the neoplasm and the adverse effect (T45.1X5, Adverse effect of antineoplastic and immunosuppressive drugs).

A 56-year-old Hispanic male with grade II follicular lymphoma involving multiple lymph node sites referred for blood transfusion to treat anemia due to chemotherapy

D64.81 Anemia due to antineoplastic chemotherapy

C82.18 Follicular lymphoma grade II, lymph nodes of multiple sites

T45.1X5A Adverse effect of antineoplastic and immunosuppressive drugs, initial encounter

Explanation: The code for the anemia is sequenced first followed by the code for the malignant neoplasm and lastly the code for the adverse effect.

When the admission/encounter is for management of an anemia associated with an adverse effect of radiotherapy, the anemia code should be sequenced first, followed by the appropriate neoplasm code and code Y84.2, Radiological procedure and radiotherapy as the cause of abnormal reaction of the patient, or of later complication, without mention of misadventure at the time of the procedure.

- D82.8 Immunodeficiency associated with other specified major defects HCC
- D82.9 Immunodeficiency associated with major defect, unspecified HCC
- √4th D83 Common variable immunodeficiency
- D83.0 Common variable immunodeficiency with predominant abnormalities of B-cell numbers and function CC HCC
- D83.1 Common variable immunodeficiency with predominant immunoregulatory T-cell disorders CC HCC
- D83.2 Common variable immunodeficiency with autoantibodies to B- or T-cells CC HCC
- D83.8 Other common variable immunodeficiencies CC HCC
- D83.9 Common variable immunodeficiency, unspecified CC HCC
- √4th D84 Other immunodeficiencies
- D84.0 Lymphocyte function antigen-1 [LFA-1] defect HCC
- D84.1 Defects in the complement system HCC
C1 esterase inhibitor [C1-INH] deficiency
- √5th D84.8 Other specified immunodeficiencies
- AHA: 2020,4Q,10-12
- D84.81 Immunodeficiency due to conditions classified elsewhere CC HCC
Code first underlying condition, such as:
chromosomal abnormalities (Q90-Q99)
diabetes mellitus (E08-E13)
malignant neoplasms (C00-C96)
EXCLUDES 1 certain disorders involving the immune mechanism (D80-D83, D84.0, D84.1, D84.9)
human immunodeficiency virus [HIV] disease (B20)

AHA: 2021,1Q,52
- √6th D84.82 Immunodeficiency due to drugs and external causes
- D84.821 Immunodeficiency due to drugs CC HCC
Immunodeficiency due to (current or past) medication
Use additional code for adverse effect if applicable, to identify adverse effect of drug (T36-T50 with fifth or six character 5)
Use additional code, if applicable, for associated long term (current) drug therapy drug or medication such as:
long term (current) drug therapy systemic steroids (Z79.52)
other long term (current) drug therapy (Z79.899)
- D84.822 Immunodeficiency due to external causes CC HCC
Code also, if applicable, radiological procedure and radiotherapy (Y84.2)
Use additional code for external cause such as:
exposure to ionizing radiation (W88)
- D84.89 Other immunodeficiencies CC HCC
- D84.9 Immunodeficiency, unspecified CC HCC
Immunocompromised NOS
Immunodeficient NOS
Immunosuppressed NOS
AHA: 2020,4Q,10
- √4th D86 Sarcoidosis
- DEF: Clustering of immune cells resulting in granuloma formation. Often affects the lungs and lymphatic system but can occur in other body sites.
- D86.0 Sarcoidosis of lung HCC
- D86.1 Sarcoidosis of lymph nodes
- D86.2 Sarcoidosis of lung with sarcoidosis of lymph nodes HCC
- D86.3 Sarcoidosis of skin
- √5th D86.8 Sarcoidosis of other sites
- D86.81 Sarcoid meningitis
- D86.82 Multiple cranial nerve palsies in sarcoidosis HCC
- D86.83 Sarcoid iridocyclitis
- D86.84 Sarcoid pyelonephritis
Tubulo-interstitial nephropathy in sarcoidosis
- D86.85 Sarcoid myocarditis

- D86.86 Sarcoid arthropathy
Polyarthritis in sarcoidosis
- D86.87 Sarcoid myositis
- D86.89 Sarcoidosis of other sites
Hepatic granuloma
Uveoparotid fever [Heerfordt]
- D86.9 Sarcoidosis, unspecified
- √4th D89 Other disorders involving the immune mechanism, not elsewhere classified
- EXCLUDES 1** hyperglobulinemia NOS (R77.1)
monoclonal gammopathy (of undetermined significance) (D47.2)
EXCLUDES 2 transplant failure and rejection (T86.-)
- D89.0 Polyclonal hypergammaglobulinemia
Benign hypergammaglobulinemic purpura
Polyclonal gammopathy NOS
- D89.1 Cryoglobulinemia HCC
Cryoglobulinemic purpura
Cryoglobulinemic vasculitis
Essential cryoglobulinemia
Idiopathic cryoglobulinemia
Mixed cryoglobulinemia
Primary cryoglobulinemia
Secondary cryoglobulinemia
- D89.2 Hypergammaglobulinemia, unspecified
- D89.3 Immune reconstitution syndrome HCC
Immune reconstitution inflammatory syndrome [IRIS]
Use additional code for adverse effect, if applicable, to identify drug (T36-T50 with fifth or sixth character 5)
- √5th D89.4 Mast cell activation syndrome and related disorders HCC
EXCLUDES 1 aggressive systemic mastocytosis (C96.21)
congenital cutaneous mastocytosis (Q82.2)
(non-congenital) cutaneous mastocytosis (D47.01)
(indolent) systemic mastocytosis (D47.02)
malignant mast cell neoplasm (C96.2-)
malignant mastocytoma (C96.29)
mast cell leukemia (C94.3-)
mast cell sarcoma (C96.22)
mastocytoma NOS (D47.09)
other mast cell neoplasms of uncertain behavior (D47.09)
systemic mastocytosis associated with a clonal hematologic non-mast cell lineage disease (SM-AHNMD) (D47.02)

AHA: 2016,4Q,11
- D89.40 Mast cell activation, unspecified HCC
Mast cell activation disorder, unspecified
Mast cell activation syndrome, NOS
- D89.41 Monoclonal mast cell activation syndrome HCC
- D89.42 Idiopathic mast cell activation syndrome HCC
- D89.43 Secondary mast cell activation HCC
Secondary mast cell activation syndrome
Code also underlying etiology, if known
- D89.44 Hereditary alpha tryptasemia HCC
Use additional code, if applicable, for:
allergy status, other than to drugs and biological substances (Z91.0-)
personal history of anaphylaxis (Z87.892)
AHA: 2021,4Q,8
- D89.49 Other mast cell activation disorder HCC
Other mast cell activation syndrome
- √5th D89.8 Other specified disorders involving the immune mechanism, not elsewhere classified
- √6th D89.81 Graft-versus-host disease HCC
Code first underlying cause, such as:
complications of blood transfusion (T80.89)
complications of transplanted organs and tissue (T86.-)
Use additional code to identify associated manifestations, such as:
desquamative dermatitis (L30.8)
diarrhea (R19.7)
elevated bilirubin (R17)
hair loss (L65.9)
- D89.810 Acute graft-versus-host disease CC UPD HCC
- D89.811 Chronic graft-versus-host disease CC UPD HCC

Chapter 9. Diseases of the Circulatory System (I00-I99)

EXCLUDES 2 certain conditions originating in the perinatal period (P04-P96)
 certain infectious and parasitic diseases (A00-B99)
 complications of pregnancy, childbirth and the puerperium (O00-O9A)
 congenital malformations, deformations, and chromosomal abnormalities (Q00-Q99)
 endocrine, nutritional and metabolic diseases (E00-E88)
 injury, poisoning and certain other consequences of external causes (S00-T88)
 neoplasms (C00-D49)
 symptoms, signs and abnormal clinical and laboratory findings, not elsewhere classified (R00-R94)
 systemic connective tissue disorders (M30-M36)
 transient cerebral ischemic attacks and related syndromes (G45.-)

This chapter contains the following blocks:

I00-I02	Acute rheumatic fever
I05-I09	Chronic rheumatic heart diseases
I10-I1A	Hypertensive diseases
I20-I25	Ischemic heart diseases
I26-I28	Pulmonary heart disease and diseases of pulmonary circulation
I30-I5A	Other forms of heart disease
I60-I69	Cerebrovascular diseases
I70-I79	Diseases of arteries, arterioles and capillaries
I80-I89	Diseases of veins, lymphatic vessels and lymph nodes, not elsewhere classified
I95-I99	Other and unspecified disorders of the circulatory system

Acute rheumatic fever (I00-I02)

DEF: Rheumatic fever: Inflammatory disease that can follow a throat infection by group A streptococci. Complications can involve the joints (arthritis), subcutaneous tissue (nodules), skin (erythema marginatum), heart (carditis), or brain (chorea).

I00 Rheumatic fever without heart involvement

INCLUDES arthritis, rheumatic, acute or subacute

EXCLUDES 1 rheumatic fever with heart involvement (I01.0-I01.9)

√4# I01 Rheumatic fever with heart involvement

EXCLUDES 1 chronic diseases of rheumatic origin (I05-I09) unless rheumatic fever is also present or there is evidence of reactivation or activity of the rheumatic process

I01.0 Acute rheumatic pericarditis

Any condition in I00 with pericarditis
 Rheumatic pericarditis (acute)

EXCLUDES 1 acute pericarditis not specified as rheumatic (I30.-)

I01.1 Acute rheumatic endocarditis

Any condition in I00 with endocarditis or valvulitis
 Acute rheumatic valvulitis

I01.2 Acute rheumatic myocarditis

Any condition in I00 with myocarditis

I01.8 Other acute rheumatic heart disease

Any condition in I00 with other or multiple types of heart involvement
 Acute rheumatic pancarditis

I01.9 Acute rheumatic heart disease, unspecified

Any condition in I00 with unspecified type of heart involvement
 Rheumatic carditis, acute
 Rheumatic heart disease, active or acute

√4# I02 Rheumatic chorea

INCLUDES Sydenham's chorea

EXCLUDES 1 chorea NOS (G25.5)

Huntington's chorea (G10)

I02.0 Rheumatic chorea with heart involvement

Chorea NOS with heart involvement
 Rheumatic chorea with heart involvement of any type classifiable under I01.-

I02.9 Rheumatic chorea without heart involvement

Rheumatic chorea NOS

Chronic rheumatic heart diseases (I05-I09)**√4# I05 Rheumatic mitral valve diseases**

INCLUDES conditions classifiable to both I05.0 and I05.2-I05.9, whether specified as rheumatic or not

EXCLUDES 1 mitral valve disease specified as nonrheumatic (I34.-)
 mitral valve disease with aortic and/or tricuspid valve involvement (I08.-)

I05.0 Rheumatic mitral stenosis

Mitral (valve) obstruction (rheumatic)

I05.1 Rheumatic mitral insufficiency

Rheumatic mitral incompetence
 Rheumatic mitral regurgitation

EXCLUDES 1 mitral insufficiency not specified as rheumatic (I34.0)

I05.2 Rheumatic mitral stenosis with insufficiency

Rheumatic mitral stenosis with incompetence or regurgitation

I05.8 Other rheumatic mitral valve diseases

Rheumatic mitral (valve) failure

I05.9 Rheumatic mitral valve disease, unspecified

Rheumatic mitral (valve) disorder (chronic) NOS

√4# I06 Rheumatic aortic valve diseases

EXCLUDES 1 aortic valve disease not specified as rheumatic (I35.-)
 aortic valve disease with mitral and/or tricuspid valve involvement (I08.-)

I06.0 Rheumatic aortic stenosis

Rheumatic aortic (valve) obstruction

I06.1 Rheumatic aortic insufficiency

Rheumatic aortic incompetence
 Rheumatic aortic regurgitation

I06.2 Rheumatic aortic stenosis with insufficiency

Rheumatic aortic stenosis with incompetence or regurgitation

I06.8 Other rheumatic aortic valve diseases**I06.9 Rheumatic aortic valve disease, unspecified**

Rheumatic aortic (valve) disease NOS

√4# I07 Rheumatic tricuspid valve diseases

INCLUDES rheumatic tricuspid valve diseases specified as rheumatic or unspecified

EXCLUDES 1 tricuspid valve disease specified as nonrheumatic (I36.-)
 tricuspid valve disease with aortic and/or mitral valve involvement (I08.-)

I07.0 Rheumatic tricuspid stenosis

Tricuspid (valve) stenosis (rheumatic)

I07.1 Rheumatic tricuspid insufficiency

Tricuspid (valve) insufficiency (rheumatic)

I07.2 Rheumatic tricuspid stenosis and insufficiency**I07.8 Other rheumatic tricuspid valve diseases****I07.9 Rheumatic tricuspid valve disease, unspecified**

Rheumatic tricuspid valve disorder NOS

I08 Multiple valve diseases

√4# INCLUDES multiple valve diseases specified as rheumatic or unspecified

EXCLUDES 1 endocarditis, valve unspecified (I38)
 multiple valve disease specified as nonrheumatic (I34.-, I35.-, I36.-, I37.-, I38.-, Q22.-, Q23.-, Q24.8-)
 rheumatic valve disease NOS (I09.1)

I08.0 Rheumatic disorders of both mitral and aortic valves

Involvement of both mitral and aortic valves specified as rheumatic or unspecified

AHA: 2019,2Q,5

I08.1 Rheumatic disorders of both mitral and tricuspid valves**I08.2 Rheumatic disorders of both aortic and tricuspid valves****I08.3 Combined rheumatic disorders of mitral, aortic and tricuspid valves****I08.8 Other rheumatic multiple valve diseases****I08.9 Rheumatic multiple valve disease, unspecified****√4# I09 Other rheumatic heart diseases****I09.0 Rheumatic myocarditis**

EXCLUDES 1 myocarditis not specified as rheumatic (I51.4)

I09.1 Rheumatic diseases of endocardium, valve unspecified

Rheumatic endocarditis (chronic)
 Rheumatic valvulitis (chronic)

EXCLUDES 1 endocarditis, valve unspecified (I38)

I09.2 Chronic rheumatic pericarditis

Adherent pericardium, rheumatic
 Chronic rheumatic mediastinopericarditis
 Chronic rheumatic myopericarditis

EXCLUDES 1 chronic pericarditis not specified as rheumatic (I31.-)

√5# I09.8 Other specified rheumatic heart diseases**I09.81 Rheumatic heart failure**

Use additional code to identify type of heart failure (I50.-)

I09.89 Other specified rheumatic heart diseases

Rheumatic disease of pulmonary valve

I09.9 Rheumatic heart disease, unspecified

Rheumatic carditis

EXCLUDES 1 rheumatoid carditis (M05.31)

- 009.892 Supervision of other high risk pregnancies, **second trimester** UPD M ♀
- 009.893 Supervision of other high risk pregnancies, **third trimester** UPD M ♀
- 009.899 Supervision of other high risk pregnancies, unspecified trimester UPD M ♀
- √5th 009.9 Supervision of high risk pregnancy, unspecified
 - 009.90 Supervision of high risk pregnancy, unspecified, unspecified trimester UPD M ♀
 - 009.91 Supervision of high risk pregnancy, unspecified, **first trimester** UPD M ♀
 - 009.92 Supervision of high risk pregnancy, unspecified, **second trimester** UPD M ♀
 - 009.93 Supervision of high risk pregnancy, unspecified, **third trimester** UPD M ♀

Edema, proteinuria and hypertensive disorders in pregnancy, childbirth and the puerperium (O10-O16)

AHA: 2016,4Q,50

- √4th **O10 Pre-existing hypertension complicating pregnancy, childbirth and the puerperium**
 - [INCLUDES]** pre-existing hypertension with pre-existing proteinuria complicating pregnancy, childbirth and the puerperium
 - [EXCLUDES 2]** pre-existing hypertension with superimposed pre-eclampsia complicating pregnancy, childbirth and the puerperium (O11.-)
- √5th **O10.0 Pre-existing essential hypertension complicating pregnancy, childbirth and the puerperium**

Any condition in I10 specified as a reason for obstetric care during pregnancy, childbirth or the puerperium

 - √6th **O10.01 Pre-existing essential hypertension complicating pregnancy**
 - 010.011 Pre-existing essential hypertension complicating pregnancy, **first trimester** CC M ♀
 - 010.012 Pre-existing essential hypertension complicating pregnancy, **second trimester** CC M ♀
 - 010.013 Pre-existing essential hypertension complicating pregnancy, **third trimester** CC M ♀
 - 010.019 Pre-existing essential hypertension complicating pregnancy, unspecified trimester M ♀
 - 010.02 Pre-existing essential hypertension complicating **childbirth** CC M ♀
 - 010.03 Pre-existing essential hypertension complicating the **puerperium** M ♀
- √5th **O10.1 Pre-existing hypertensive heart disease complicating pregnancy, childbirth and the puerperium**

Any condition in I11 specified as a reason for obstetric care during pregnancy, childbirth or the puerperium

Use additional code from I11 to identify the type of hypertensive heart disease

 - √6th **O10.11 Pre-existing hypertensive heart disease complicating pregnancy**
 - 010.111 Pre-existing hypertensive heart disease complicating pregnancy, **first trimester** M ♀
 - 010.112 Pre-existing hypertensive heart disease complicating pregnancy, **second trimester** M ♀
 - 010.113 Pre-existing hypertensive heart disease complicating pregnancy, **third trimester** M ♀
 - 010.119 Pre-existing hypertensive heart disease complicating pregnancy, unspecified trimester M ♀
 - 010.12 Pre-existing hypertensive heart disease complicating **childbirth** M ♀
 - 010.13 Pre-existing hypertensive heart disease complicating the **puerperium** M ♀

- √5th **O10.2 Pre-existing hypertensive chronic kidney disease complicating pregnancy, childbirth and the puerperium**

Any condition in I12 specified as a reason for obstetric care during pregnancy, childbirth or the puerperium

Use additional code from I12 to identify the type of hypertensive chronic kidney disease

 - √6th **O10.21 Pre-existing hypertensive chronic kidney disease complicating pregnancy**
 - 010.211 Pre-existing hypertensive chronic kidney disease complicating pregnancy, **first trimester** M ♀
 - 010.212 Pre-existing hypertensive chronic kidney disease complicating pregnancy, **second trimester** M ♀
 - 010.213 Pre-existing hypertensive chronic kidney disease complicating pregnancy, **third trimester** M ♀
 - 010.219 Pre-existing hypertensive chronic kidney disease complicating pregnancy, unspecified trimester M ♀
 - 010.22 Pre-existing hypertensive chronic kidney disease complicating **childbirth** M ♀
 - 010.23 Pre-existing hypertensive chronic kidney disease complicating the **puerperium** M ♀
- √5th **O10.3 Pre-existing hypertensive heart and chronic kidney disease complicating pregnancy, childbirth and the puerperium**

Any condition in I13 specified as a reason for obstetric care during pregnancy, childbirth or the puerperium

Use additional code from I13 to identify the type of hypertensive heart and chronic kidney disease

 - √6th **O10.31 Pre-existing hypertensive heart and chronic kidney disease complicating pregnancy**
 - 010.311 Pre-existing hypertensive heart and chronic kidney disease complicating pregnancy, **first trimester** M ♀
 - 010.312 Pre-existing hypertensive heart and chronic kidney disease complicating pregnancy, **second trimester** M ♀
 - 010.313 Pre-existing hypertensive heart and chronic kidney disease complicating pregnancy, **third trimester** M ♀
 - 010.319 Pre-existing hypertensive heart and chronic kidney disease complicating pregnancy, unspecified trimester M ♀
 - 010.32 Pre-existing hypertensive heart and chronic kidney disease complicating **childbirth** M ♀
 - 010.33 Pre-existing hypertensive heart and chronic kidney disease complicating the **puerperium** M ♀
- √5th **O10.4 Pre-existing secondary hypertension complicating pregnancy, childbirth and the puerperium**

Any condition in I15 specified as a reason for obstetric care during pregnancy, childbirth or the puerperium

Use additional code from I15 to identify the type of secondary hypertension

 - √6th **O10.41 Pre-existing secondary hypertension complicating pregnancy**
 - 010.411 Pre-existing secondary hypertension complicating pregnancy, **first trimester** CC M ♀
 - 010.412 Pre-existing secondary hypertension complicating pregnancy, **second trimester** CC M ♀
 - 010.413 Pre-existing secondary hypertension complicating pregnancy, **third trimester** CC M ♀
 - 010.419 Pre-existing secondary hypertension complicating pregnancy, unspecified trimester M ♀
 - 010.42 Pre-existing secondary hypertension complicating **childbirth** MCC M ♀
 - 010.43 Pre-existing secondary hypertension complicating the **puerperium** CC M ♀
- √5th **O10.9 Unspecified pre-existing hypertension complicating pregnancy, childbirth and the puerperium**
 - √6th **O10.91 Unspecified pre-existing hypertension complicating pregnancy**
 - 010.911 Unspecified pre-existing hypertension complicating pregnancy, **first trimester** CC M ♀
 - 010.912 Unspecified pre-existing hypertension complicating pregnancy, **second trimester** CC M ♀

- ✓7th S52.092 Other fracture of upper end of **left** ulna MCC CC H5
- ✓7th S52.099 Other fracture of upper end of unspecified ulna MCC CC H5 UNS
- ✓6th S52.1 Fracture of **upper end of radius**
Fracture of proximal end of radius
EXCLUDES 2 fracture of shaft of radius (S52.3-)
physeal fractures of upper end of radius (S59.2-)
- ✓6th S52.10 Unspecified fracture of upper end of radius
 - ✓7th S52.101 Unspecified fracture of upper end of **right** radius MCC CC H5
 - ✓7th S52.102 Unspecified fracture of upper end of **left** radius MCC CC H5
 - ✓7th S52.109 Unspecified fracture of upper end of unspecified radius MCC CC H5 UNS
- ✓6th S52.11 **Torus** fracture of upper end of radius
The appropriate 7th character is to be added to all codes in subcategory S52.11
A initial encounter for closed fracture
D subsequent encounter for fracture with routine healing
G subsequent encounter for fracture with delayed healing
K subsequent encounter for fracture with nonunion
P subsequent encounter for fracture with malunion
S sequela
 - ✓7th S52.111 Torus fracture of upper end of **right** radius CC H5
 - ✓7th S52.112 Torus fracture of upper end of **left** radius CC H5
 - ✓7th S52.119 Torus fracture of upper end of unspecified radius CC H5 UNS
- ✓6th S52.12 Fracture of **head** of radius
 - ✓7th S52.121 Displaced fracture of head of **right** radius MCC CC H5
 - ✓7th S52.122 Displaced fracture of head of **left** radius MCC CC H5
 - ✓7th S52.123 Displaced fracture of head of unspecified radius MCC CC H5 UNS
 - ✓7th S52.124 Nondisplaced fracture of head of **right** radius MCC CC H5
 - ✓7th S52.125 Nondisplaced fracture of head of **left** radius MCC CC H5
 - ✓7th S52.126 Nondisplaced fracture of head of unspecified radius MCC CC H5 UNS
- ✓6th S52.13 Fracture of **neck** of radius
 - ✓7th S52.131 Displaced fracture of neck of **right** radius MCC CC H5
 - ✓7th S52.132 Displaced fracture of neck of **left** radius MCC CC H5
 - ✓7th S52.133 Displaced fracture of neck of unspecified radius MCC CC H5 UNS
 - ✓7th S52.134 Nondisplaced fracture of neck of **right** radius MCC CC H5
 - ✓7th S52.135 Nondisplaced fracture of neck of **left** radius MCC CC H5
 - ✓7th S52.136 Nondisplaced fracture of neck of unspecified radius MCC CC H5 UNS
- ✓6th S52.18 Other fracture of upper end of radius
 - ✓7th S52.181 Other fracture of upper end of **right** radius MCC CC H5
 - ✓7th S52.182 Other fracture of upper end of **left** radius MCC CC H5
 - ✓7th S52.189 Other fracture of upper end of unspecified radius MCC CC H5 UNS
- ✓5th S52.2 Fracture of **shaft of ulna**
 - ✓6th S52.20 Unspecified fracture of shaft of ulna
Fracture of ulna NOS
 - ✓7th S52.201 Unspecified fracture of shaft of **right** ulna MCC CC H5
 - ✓7th S52.202 Unspecified fracture of shaft of **left** ulna MCC CC H5
 - ✓7th S52.209 Unspecified fracture of shaft of unspecified ulna MCC CC H5 UNS

- ✓6th S52.21 **Greenstick** fracture of shaft of ulna
The appropriate 7th character is to be added to all codes in subcategory S52.21
A initial encounter for closed fracture
D subsequent encounter for fracture with routine healing
G subsequent encounter for fracture with delayed healing
K subsequent encounter for fracture with nonunion
P subsequent encounter for fracture with malunion
S sequela
 - ✓7th S52.211 Greenstick fracture of shaft of **right** ulna CC H5
 - ✓7th S52.212 Greenstick fracture of shaft of **left** ulna CC H5
 - ✓7th S52.219 Greenstick fracture of shaft of unspecified ulna CC H5 UNS
- ✓6th S52.22 **Transverse** fracture of shaft of ulna
 - ✓7th S52.221 Displaced transverse fracture of shaft of **right** ulna MCC CC H5
 - ✓7th S52.222 Displaced transverse fracture of shaft of **left** ulna MCC CC H5
 - ✓7th S52.223 Displaced transverse fracture of shaft of unspecified ulna MCC CC H5 UNS
 - ✓7th S52.224 Nondisplaced transverse fracture of shaft of **right** ulna MCC CC H5
 - ✓7th S52.225 Nondisplaced transverse fracture of shaft of **left** ulna MCC CC H5
 - ✓7th S52.226 Nondisplaced transverse fracture of shaft of unspecified ulna MCC CC H5 UNS
- ✓6th S52.23 **Oblique** fracture of shaft of ulna
 - ✓7th S52.231 Displaced oblique fracture of shaft of **right** ulna MCC CC H5
 - ✓7th S52.232 Displaced oblique fracture of shaft of **left** ulna MCC CC H5
 - ✓7th S52.233 Displaced oblique fracture of shaft of unspecified ulna MCC CC H5 UNS
 - ✓7th S52.234 Nondisplaced oblique fracture of shaft of **right** ulna MCC CC H5
 - ✓7th S52.235 Nondisplaced oblique fracture of shaft of **left** ulna MCC CC H5
 - ✓7th S52.236 Nondisplaced oblique fracture of shaft of unspecified ulna MCC CC H5 UNS
- ✓6th S52.24 **Spiral** fracture of shaft of ulna
 - ✓7th S52.241 Displaced spiral fracture of shaft of ulna, **right** arm MCC CC H5
 - ✓7th S52.242 Displaced spiral fracture of shaft of ulna, **left** arm MCC CC H5
 - ✓7th S52.243 Displaced spiral fracture of shaft of ulna, unspecified arm MCC CC H5 UNS
 - ✓7th S52.244 Nondisplaced spiral fracture of shaft of ulna, **right** arm MCC CC H5
 - ✓7th S52.245 Nondisplaced spiral fracture of shaft of ulna, **left** arm MCC CC H5
 - ✓7th S52.246 Nondisplaced spiral fracture of shaft of ulna, unspecified arm MCC CC H5 UNS
- ✓6th S52.25 **Comminuted** fracture of shaft of ulna
 - ✓7th S52.251 Displaced comminuted fracture of shaft of ulna, **right** arm MCC CC H5
 - ✓7th S52.252 Displaced comminuted fracture of shaft of ulna, **left** arm MCC CC H5
 - ✓7th S52.253 Displaced comminuted fracture of shaft of ulna, unspecified arm MCC CC H5 UNS
 - ✓7th S52.254 Nondisplaced comminuted fracture of shaft of ulna, **right** arm MCC CC H5
 - ✓7th S52.255 Nondisplaced comminuted fracture of shaft of ulna, **left** arm MCC CC H5
 - ✓7th S52.256 Nondisplaced comminuted fracture of shaft of ulna, unspecified arm MCC CC H5 UNS
- ✓6th S52.26 **Segmental** fracture of shaft of ulna
 - ✓7th S52.261 Displaced segmental fracture of shaft of ulna, **right** arm MCC CC H5
 - ✓7th S52.262 Displaced segmental fracture of shaft of ulna, **left** arm MCC CC H5

- √6th** T83.09 **Other mechanical complication of urinary catheter**
Obstruction (mechanical) of urinary catheter
Perforation of urinary catheter
Protrusion of urinary catheter
- √7th** T83.090 **Other mechanical complication of cystostomy catheter** **CC HCC**
- √7th** T83.091 **Other mechanical complication of indwelling urethral catheter** **HCC**
- √7th** T83.092 **Other mechanical complication of nephrostomy catheter** **HCC**
- √7th** T83.098 **Other mechanical complication of other urinary catheter** **HCC**
Other mechanical complication of Hopkins catheter
Other mechanical complication of ileostomy catheter
Other mechanical complication of urostomy catheter
- √5th** T83.1 **Mechanical complication of other urinary devices and implants**
- √6th** T83.11 **Breakdown (mechanical) of other urinary devices and implants**
- √7th** T83.110 **Breakdown (mechanical) of urinary electronic stimulator device** **CC HCC**
EXCLUDES 2 *breakdown (mechanical) of electrode (lead) for sacral nerve neurostimulator (T85.111)*
breakdown (mechanical) of implanted electronic sacral neurostimulator, pulse generator or receiver (T85.113)
- √7th** T83.111 **Breakdown (mechanical) of implanted urinary sphincter** **CC HCC**
- √7th** T83.112 **Breakdown (mechanical) of indwelling ureteral stent** **CC HCC**
- √7th** T83.113 **Breakdown (mechanical) of other urinary stents** **CC HCC**
Breakdown (mechanical) of ileal conduit stent
Breakdown (mechanical) of nephroureteral stent
- √7th** T83.118 **Breakdown (mechanical) of other urinary devices and implants** **CC HCC**
- √6th** T83.12 **Displacement of other urinary devices and implants**
Malposition of other urinary devices and implants
- √7th** T83.120 **Displacement of urinary electronic stimulator device** **CC HCC**
EXCLUDES 2 *displacement of electrode (lead) for sacral nerve neurostimulator (T85.121)*
displacement of implanted electronic sacral neurostimulator, pulse generator or receiver (T85.123)
- √7th** T83.121 **Displacement of implanted urinary sphincter** **CC HCC**
- √7th** T83.122 **Displacement of indwelling ureteral stent** **CC HCC**
- √7th** T83.123 **Displacement of other urinary stents** **CC HCC**
Displacement of ileal conduit stent
Displacement of nephroureteral stent
- √7th** T83.128 **Displacement of other urinary devices and implants** **CC HCC**

- √6th** T83.19 **Other mechanical complication of other urinary devices and implants**
Leakage of other urinary devices and implants
Obstruction (mechanical) of other urinary devices and implants
Perforation of other urinary devices and implants
Protrusion of other urinary devices and implants
- √7th** T83.190 **Other mechanical complication of urinary electronic stimulator device** **CC HCC**
EXCLUDES 2 *other mechanical complication of electrode (lead) for sacral nerve neurostimulator (T85.191)*
other mechanical complication of implanted electronic sacral neurostimulator, pulse generator or receiver (T85.193)
- √7th** T83.191 **Other mechanical complication of implanted urinary sphincter** **CC HCC**
- √7th** T83.192 **Other mechanical complication of indwelling ureteral stent** **CC HCC**
- √7th** T83.193 **Other mechanical complication of other urinary stent** **CC HCC**
Other mechanical complication of ileal conduit stent
Other mechanical complication of nephroureteral stent
- √7th** T83.198 **Other mechanical complication of other urinary devices and implants** **CC HCC**
- √5th** T83.2 **Mechanical complication of graft of urinary organ**
- √x7th** T83.21 **Breakdown (mechanical) of graft of urinary organ** **CC HCC**
- √x7th** T83.22 **Displacement of graft of urinary organ** **CC HCC**
Malposition of graft of urinary organ
- √x7th** T83.23 **Leakage of graft of urinary organ** **CC HCC**
- √x7th** T83.24 **Erosion of graft of urinary organ** **CC HCC**
- √x7th** T83.25 **Exposure of graft of urinary organ** **CC HCC**
- √x7th** T83.29 **Other mechanical complication of graft of urinary organ** **CC HCC**
Obstruction (mechanical) of graft of urinary organ
Perforation of graft of urinary organ
Protrusion of graft of urinary organ
- √5th** T83.3 **Mechanical complication of intrauterine contraceptive device**
- √x7th** T83.31 **Breakdown (mechanical) of intrauterine contraceptive device** ♀
- √x7th** T83.32 **Displacement of intrauterine contraceptive device** ♀
Malposition of intrauterine contraceptive device
Missing string of intrauterine contraceptive device
AHA: 2018,1Q,5
- √x7th** T83.39 **Other mechanical complication of intrauterine contraceptive device** ♀
Leakage of intrauterine contraceptive device
Obstruction (mechanical) of intrauterine contraceptive device
Perforation of intrauterine contraceptive device
Protrusion of intrauterine contraceptive device
- √5th** T83.4 **Mechanical complication of other prosthetic devices, implants and grafts of genital tract**
- √6th** T83.41 **Breakdown (mechanical) of other prosthetic devices, implants and grafts of genital tract**
- √7th** T83.410 **Breakdown (mechanical) of implanted penile prosthesis** **CC HCC** ♂
Breakdown (mechanical) of penile prosthesis cylinder
Breakdown (mechanical) of penile prosthesis pump
Breakdown (mechanical) of penile prosthesis reservoir
- √7th** T83.411 **Breakdown (mechanical) of implanted testicular prosthesis** **CC HCC**
- √7th** T83.418 **Breakdown (mechanical) of other prosthetic devices, implants and grafts of genital tract** **CC HCC**

Appendix G: Hospital Acquired Conditions

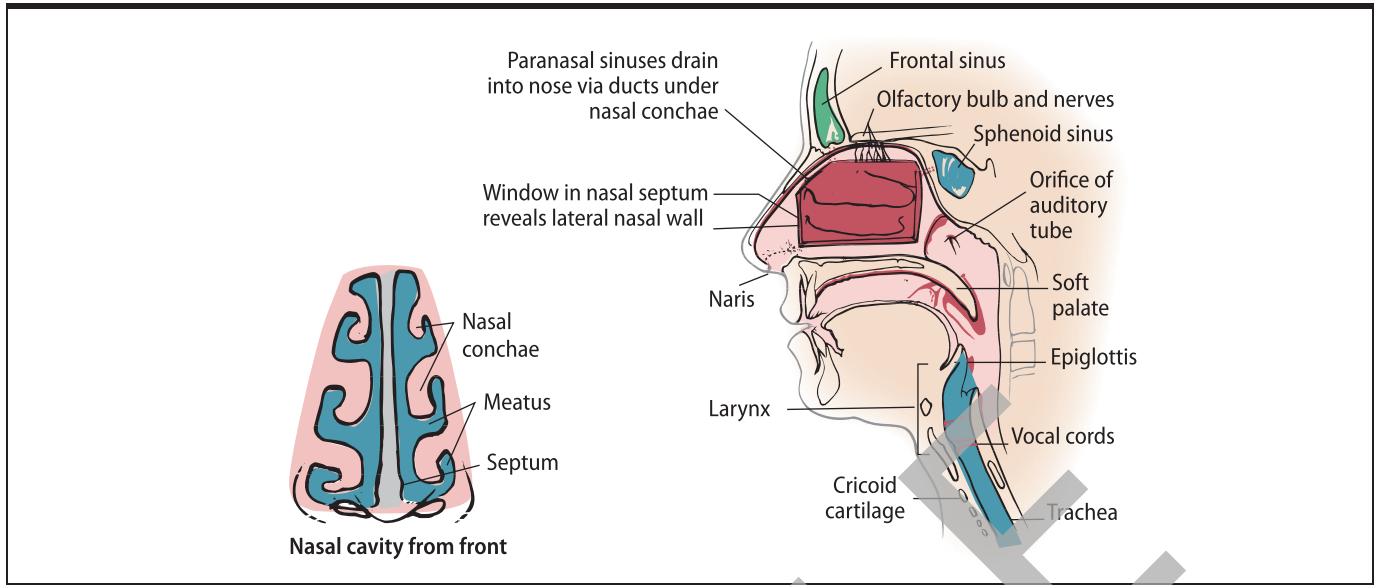
Hospital-acquired conditions (HACs) are conditions considered reasonably preventable through the application of evidence-based guidelines. These conditions, in and of themselves, are either a complication or comorbidity (CC) or major complication or comorbidity (MCC) that as a secondary diagnosis will move the MS-DRG assignment from a lower-paying MS-DRG to a higher-paying MS-DRG. However, if these conditions are not present on admission (meaning they developed during the hospital stay), the CC or MCC designation is nullified and the case will not group to the higher-paying MS-DRG based solely upon the reporting of the HAC code.

HACs are grouped into 14 categories. ICD-10-CM codes in the tabular section of this book that are grouped to one of these HAC categories are identified by an icon specific to that category. As many of these HACs are conditional, this resource provides any additional stipulations that may be required before the code can be considered an HAC. For example, code I26.02 has an icon indicating it falls in the HAC 10 category for Deep Vein Thrombosis (DVT) or Pulmonary Embolism (PE) with Total Knee or Hip Replacement. However, I26.02 is not, by itself, an HAC. There must also be a specific ICD-10-PCS code, such as 0SR9019 Replacement of Right Hip Joint with Metal Synthetic Substitute, Cemented, Open Approach, applied in order for I26.02 to act as an HAC.

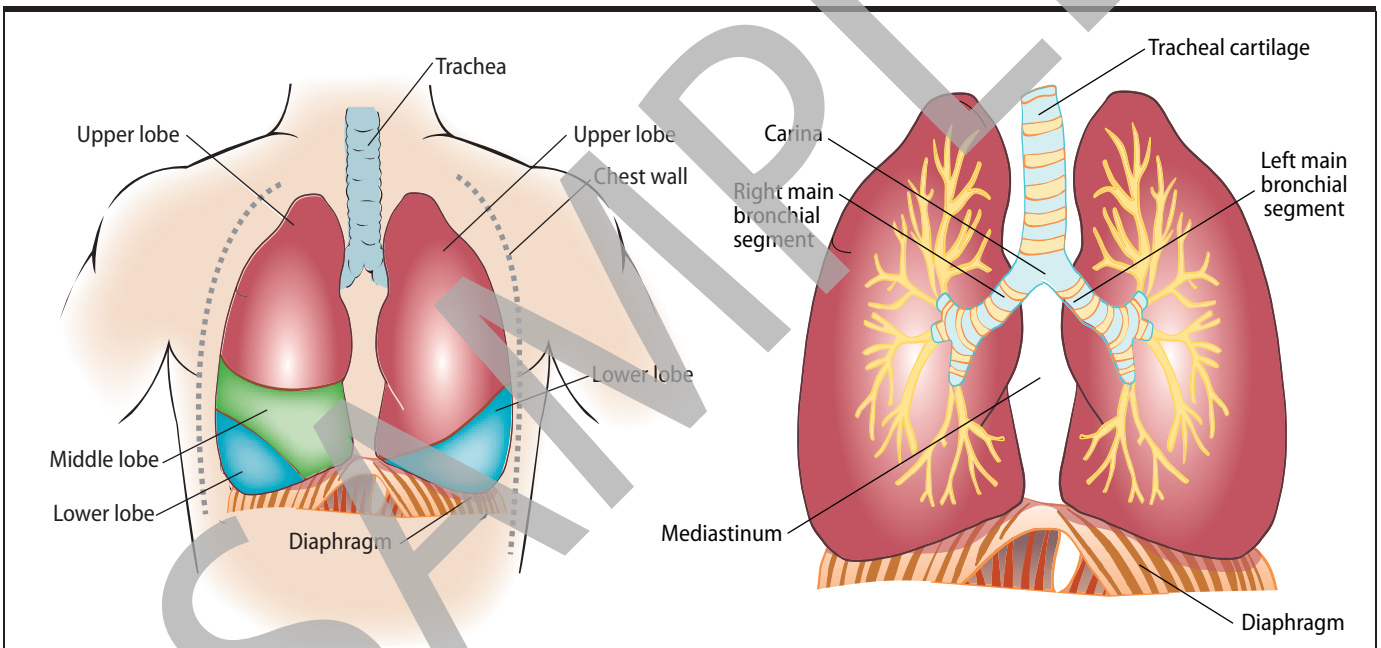
Note: The resource used to compile this list is based on the proposed, version 41, MS-DRG Grouper software and Definitions Manual files published with the fiscal 2024 IPPS proposed rule. The final, version 41, MS-DRG Grouper files and MS-DRG Definitions Manual files can be found at the following: <https://www.cms.gov/Medicare/Medicare-Fee-for-Service-Payment/AcuteInpatientPPS/PPS-Regulations-and-Notices.html>.

HAC 01: Foreign Object Retained After Surgery	HAC 02: Air Embolism	L89.604	S02.129B	S02.632A	S06.1XAA	S06.346A	S06.5X0A
Secondary diagnosis not POA:	Secondary diagnosis not POA:	L89.613	S02.19XA	S02.632B	S06.2X1A	S06.347A	S06.5X1A
T81.500A	T80.0XXA	L89.614	S02.19XB	S02.640A	S06.2X2A	S06.348A	S06.5X2A
T81.501A		L89.623	S02.2XXB	S02.640B	S06.2X3A	S06.349A	S06.5X3A
T81.502A		L89.624	S02.30XA	S02.641A	S06.2X4A	S06.34AA	S06.5X4A
T81.503A		L89.813	S02.30XB	S02.641B	S06.2X5A	S06.350A	S06.5X5A
T81.504A		L89.814	S02.31XA	S02.642A	S06.2X6A	S06.351A	S06.5X6A
T81.505A		L89.893	S02.31XB	S02.642B	S06.2X7A	S06.352A	S06.5X7A
T81.506A		L89.894	S02.32XA	S02.650A	S06.2X8A	S06.353A	S06.5X8A
T81.507A		L89.93	S02.32XB	S02.650B	S06.2X9A	S06.354A	S06.5X9A
T81.508A		L89.94	S02.400A	S02.651A	S06.2XAA	S06.355A	S06.5XAA
T81.509A			S02.400B	S02.651B	S06.301A	S06.356A	S06.6X0A
T81.510A			S02.401A	S02.652A	S06.302A	S06.357A	S06.6X1A
T81.511A			S02.401B	S02.652B	S06.303A	S06.358A	S06.6X2A
T81.512A			S02.402A	S02.66XA	S06.304A	S06.359A	S06.6X3A
T81.513A			S02.402B	S02.66XB	S06.305A	S06.35AA	S06.6X4A
T81.514A			S02.40AA	S02.670A	S06.306A	S06.360A	S06.6X5A
T81.515A			S02.40AB	S02.670B	S06.307A	S06.361A	S06.6X6A
T81.516A			S02.40BA	S02.671A	S06.308A	S06.362A	S06.6X7A
T81.517A			S02.40BB	S02.671B	S06.309A	S06.363A	S06.6X8A
T81.518A			S02.40CA	S02.672A	S06.30AA	S06.364A	S06.6X9A
T81.519A			S02.40CB	S02.672B	S06.310A	S06.365A	S06.6XAA
T81.520A			S02.40DA	S02.69XA	S06.311A	S06.366A	S06.811A
T81.521A			S02.40DB	S02.69XB	S06.312A	S06.367A	S06.812A
T81.522A			S02.40EA	S02.80XA	S06.313A	S06.368A	S06.813A
T81.523A			S02.40EB	S02.80XB	S06.314A	S06.369A	S06.814A
T81.524A			S02.40FA	S02.81XA	S06.315A	S06.36AA	S06.815A
T81.525A			S02.40FB	S02.81XB	S06.316A	S06.370A	S06.816A
T81.526A			S02.411A	S02.82XA	S06.317A	S06.371A	S06.817A
T81.527A			S02.411B	S02.82XB	S06.318A	S06.372A	S06.818A
T81.528A			S02.412A	S02.831A	S06.319A	S06.373A	S06.819A
T81.529A			S02.412B	S02.831B	S06.31AA	S06.374A	S06.81AA
T81.530A			S02.413A	S02.832A	S06.320A	S06.375A	S06.821A
T81.531A			S02.413B	S02.832B	S06.321A	S06.376A	S06.822A
T81.532A			S02.42XA	S02.839A	S06.322A	S06.377A	S06.823A
T81.533A			S02.42XB	S02.839B	S06.323A	S06.378A	S06.824A
T81.534A			S02.600A	S02.841A	S06.324A	S06.379A	S06.825A
T81.535A			S02.600B	S02.841B	S06.325A	S06.37AA	S06.826A
T81.536A			S02.601A	S02.842A	S06.326A	S06.380A	S06.827A
T81.537A			S02.601B	S02.842B	S06.327A	S06.381A	S06.828A
T81.538A			S02.602A	S02.849A	S06.328A	S06.382A	S06.829A
T81.539A			S02.602B	S02.849B	S06.329A	S06.383A	S06.82AA
T81.590A			S02.609A	S02.85XA	S06.32AA	S06.384A	S06.891A
T81.591A			S02.609B	S02.85XB	S06.330A	S06.385A	S06.892A
T81.592A			S02.610A	S02.91XA	S06.331A	S06.386A	S06.893A
T81.593A			S02.610B	S02.91XB	S06.332A	S06.387A	S06.894A
T81.594A			S02.611A	S02.92XA	S06.333A	S06.388A	S06.895A
T81.595A			S02.611B	S02.92XB	S06.334A	S06.389A	S06.896A
T81.596A			S02.612A	S06.0X1A	S06.335A	S06.38AA	S06.897A
T81.597A			S02.612B	S06.0X9A	S06.336A	S06.4X0A	S06.898A
T81.598A			S02.620A	S06.0XAA	S06.337A	S06.4X1A	S06.899A
T81.599A			S02.620B	S06.1X1A	S06.338A	S06.4X2A	S06.89AA
T81.600A			S02.621A	S06.1X2A	S06.339A	S06.4X3A	S06.8A0A
T81.61XA			S02.621B	S06.1X3A	S06.33AA	S06.4X4A	S06.8A1A
T81.69XA			S02.622A	S06.1X4A	S06.340A	S06.4X5A	S06.8A2A
			S02.622B	S06.1X5A	S06.341A	S06.4X6A	
			S02.630A	S06.1X6A	S06.342A	S06.4X7A	
			S02.630B	S06.1X7A	S06.343A	S06.4X8A	
			S02.631A	S06.1X8A	S06.344A	S06.4X9A	
			S02.631B	S06.1X9A	S06.345A	S06.4XAA	
							HAC 05: Falls and Trauma (continued)
							S06.8A3A

Upper Respiratory System



Lower Respiratory System



Paranasal Sinuses

